

APPENDIX E-1

Door Replacement Drawings A-100 thru A-104

IFB #1097

Contract #: To be Determined

HIGHLAND RC DOOR REPLACEMENT AT BUILDING #29

HIGHLAND RESIDENTIAL CENTER

629 North Chodikee Lake Road

Highland, New York 12528-2726

NEW YORK STATE

OFFICE FOR CHILDREN AND FAMILY SERVICES


52 Washington Street

Rensselaer, New York 12144-2735

SYMBOLS

 NEW DOOR TO BE INSTALL

 EXISTING WALL

 DOOR TYPE

29-BR-X BUILDING # - BEDROOM - ROOM #

NOTES

1. THESE DRAWINGS ARE NOT INTENDED AS STAND ALONE DOCUMENTS. REFER TO FULL CONSTRUCTION DOCUMENT PACKAGE FOR COMPLETE PROJECT INFORMATION AND DETAILS.
2. EXAMINE THE CONTRACT DOCUMENTS THOROUGHLY AND REPORT ANY ERRORS OR DISCREPANCIES TO THE DIRECTOR'S REPRESENTATIVE AND WAIT FOR DIRECTION BEFORE COMMENCING THE WORK.
3. CONTINUE TO VERIFY CONDITIONS AS THE WORK PROGRESSES.
4. REPORT ANY ADDITIONAL DISCREPANCIES BETWEEN EXISTING CONDITIONS AND CONTRACT DOCUMENTS TO THE DIRECTOR'S REPRESENTATIVE AND WAIT FOR DIRECTION BEFORE CONTINUING WITH THE WORK.
5. DO NOT CHANGE SIZE OR SPACING OF FRAMING OR OTHER ELEMENTS WITHOUT PRIOR WRITTEN AUTHORIZATION FROM DIRECTOR'S REPRESENTATIVE.
6. COMPONENTS NECESSARY FOR CONSTRUCTION SAFETY ARE THE SOLE RESPONSIBILITY OF THE CONTRACTOR.
7. DETAILS SHOWN ARE TYPICAL: NOTES AND DETAILS APPLY TO SIMILAR CONDITIONS UNLESS NOTED OTHERWISE.
8. DO NOT SCALE DRAWINGS.
9. PROTECT EXISTING FINISHES AND MATERIALS TO REMAIN THROUGHOUT
10. REUSE EXISTING BEDROOM HARDWARE ON NEW DOORS



KATHY HOCHUL
Governor
REBEKA J. POOLER
Commissioner

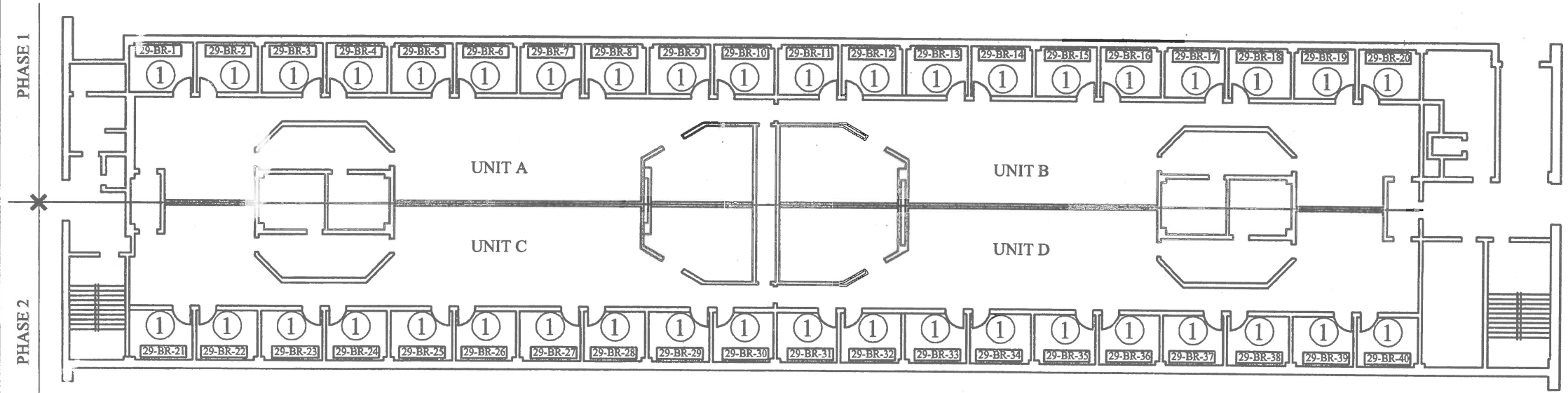
CONTRACTOR

WARNING:
THE ALTERATION OF THIS MATERIAL IN ANY WAY, UNLESS DONE UNDER THE DIRECTION OF A QUALIFIED PROFESSIONAL, I.E. ARCHITECT FOR AN ARCHITECT, ENGINEER FOR AN ENGINEER OR LANDSCAPE ARCHITECT FOR A LANDSCAPE ARCHITECT, IS A VIOLATION OF THE NEW YORK STATE BUILDING LAW AND/OR REGULATIONS AND IS A CLASS "C" VIOLATION.

CONSTRUCTION
PROVIDE DOORS
HIGHLAND RESIDENTIAL CENTER
629 NORTH CHODKIE LAKE ROAD
HIGHLAND, NY 12528
OFFICE OF CHILDREN AND FAMILY SERVICES

DATE	XX/XX/XXXX	YOUR SIGNATURE
BY	DATE	DESCRIPTION
PROJECT NUMBER	CFS-3340	
DRAWN BY		
CHECKED BY		
FIELD CHECK	--	
APPROVED		

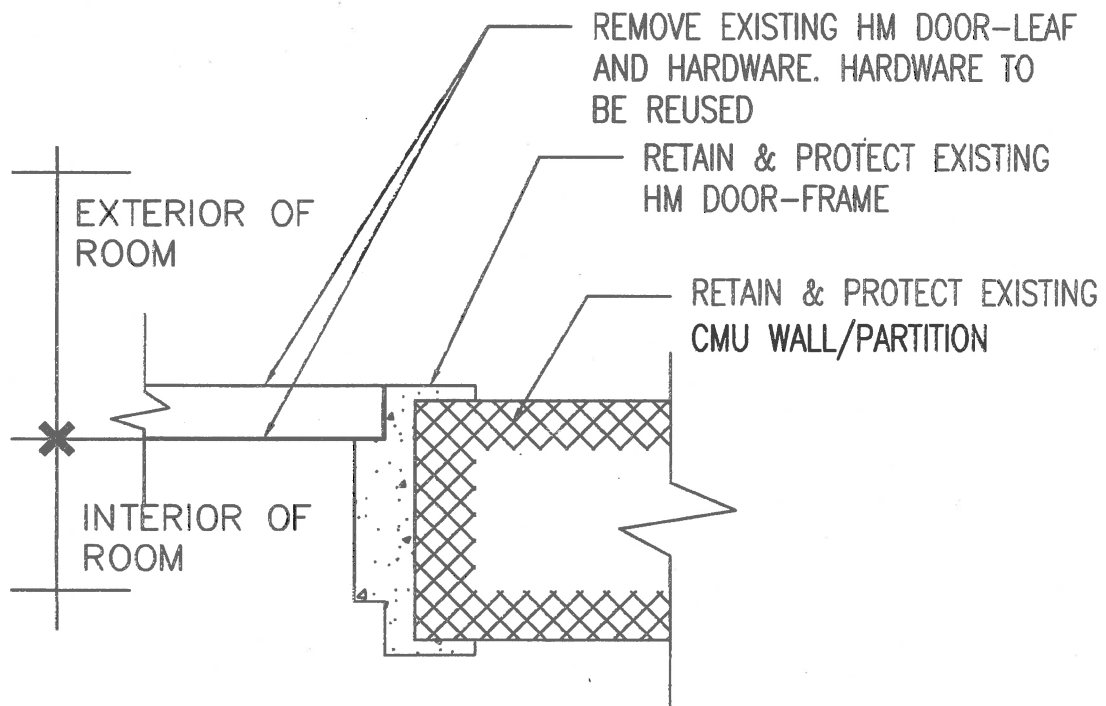
BUILDING 29
2ND FLOOR
DOOR LAYOUT
A-101




1 BUILDING 29 2nd FLOOR DOOR LAYOUT
A101 SCALE: NOT TO SCALE

GENERAL NOTES

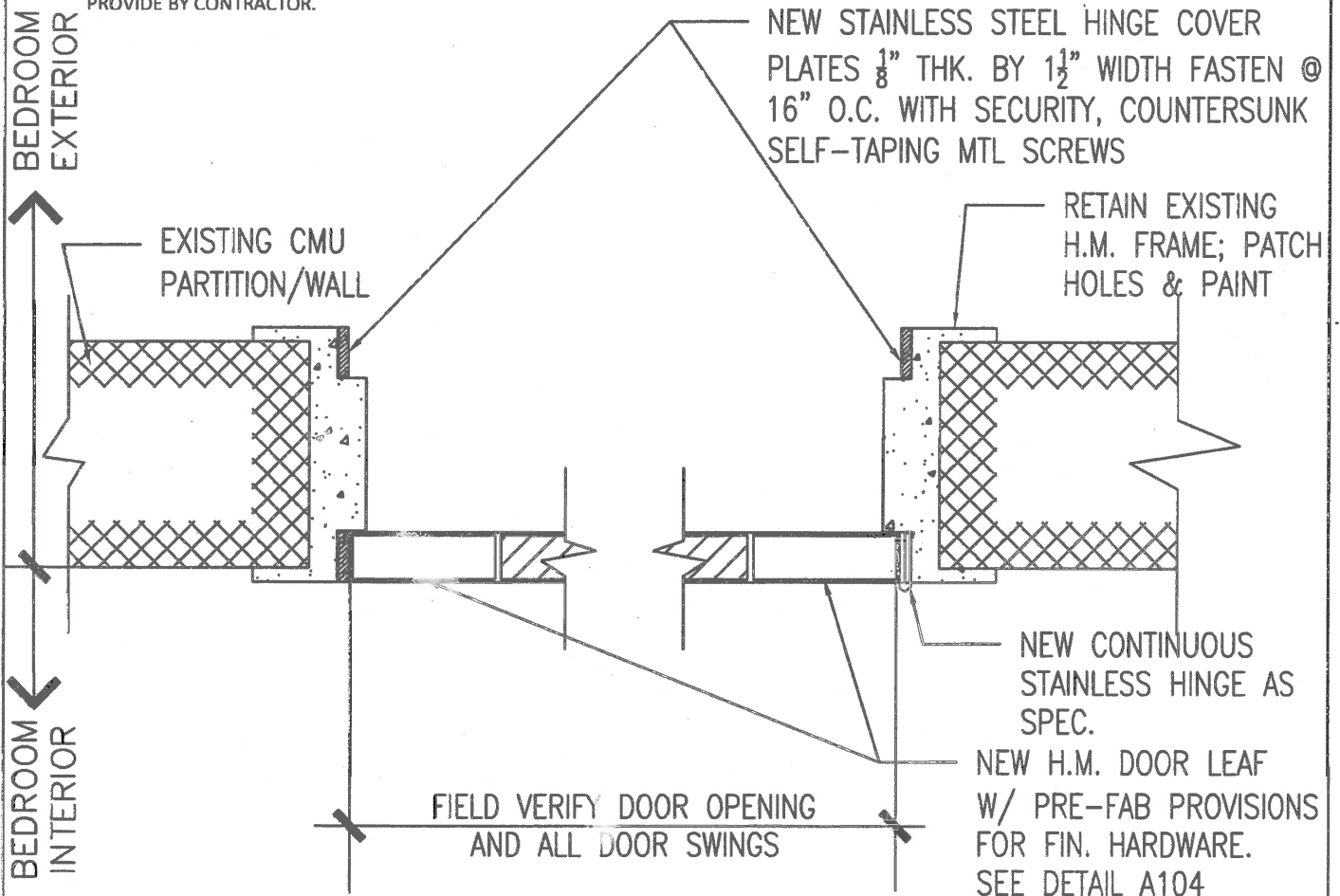
1. FIELD VERIFY EXISTING LOCKSET TYPE AND PLACEMENT IN ALIGNMENT WITH EXISTING STRIKE PLATES FOR EACH DOORWAY. FABRICATE NEW HOLLOW METAL (H.M.) DOOR LEAF TO REUSE AND ACCEPT EXISTING LOCKSETS.
2. INSTALL EXISTING LOCKET IN NEW HM DOOR LEAF POSITIONED TO ALIGN WITH EXISTING STRIKE-PLATE HOLE IN EXISTING DOORFRAME.
3. FIELD VERIFY DOORWAY CLEAR OPENING WITH AND WITHOUT NEW STAINLESS STEEL COVER PLATE. FABRICATE NEW HM DOOR LEAF TO FIT INTO REDUCE DOORWAY CLEAR OPENING WITH STAINLESS STEEL COVER PLATE.
4. PROVIDE STAINLESS STEEL COVER PLATE (THREE PER DOOR FRAME) WITH FACTORY DRILLED HOLES (SPACED 16" ON CENTERS) FOR FASTENERS AND FOR LOCKSET THROW-BOLT.
5. PROVIDE NEW CONTINUOUS STAINLESS-STEEL HINGE FOR EACH DOORWAY, SIZE TO FIT CLEAR DOOR OPENINGS. PRODUCT: MARKER HEAVY DUTY, CONTINUOUS HINGE FOR FIRE LABELED AND NON-FIRE LABELED DOORS; FM300-HT; PIN AND BARREL TYPE WITH PIN RESTRAIN CONCEALED WHEN IN CLOSED POSITION; BEVELED TOP END OF HINGE ASSEMBLY AT 45 DEGREES; FINISH SATIN STAINLESS STEEL. EQUAL PRODUCT TO BE REVIEW AND APPROVED WITH SUBMITTAL PROVIDE BY CONTRACTOR.




DRAWING NO. A102	DRAWING NAME: DOOR-LEAF & HARDWARE REMOVAL		PROJECT NAME: PROVIDE DOORS HIGHLAND RESIDENTIAL CENTER	IT IS A VIOLATION OF THE LAW FOR ANY PERSON, UNLESS HE IS ACTING UNDER THE DIRECTION OF A LICENSED PROFESSIONAL ARCHITECT TO ALTER THIS DRAWING IN ANY WAY. ALTERATIONS MUST HAVE THE SEAL AFFIXED ALONG WITH A DESCRIPTION OF THE ALTERATION, DATE AND SIGNATURE. COPYRIGHT 2008
	OF	PROJ.#	REVISIONS:	
DWG. BY:	DWG. DATE:	 Office of Children and Family Services KATHY HOCHUL Governor SHEILA J. POOLE Commissioner		Capital Services Bureau PH.(518) 473-0487 Room 106 South Capital View Office Park 52 Washington Street Rensselaer, N.Y. 12144
CKD. BY:	PLOT DATE:			

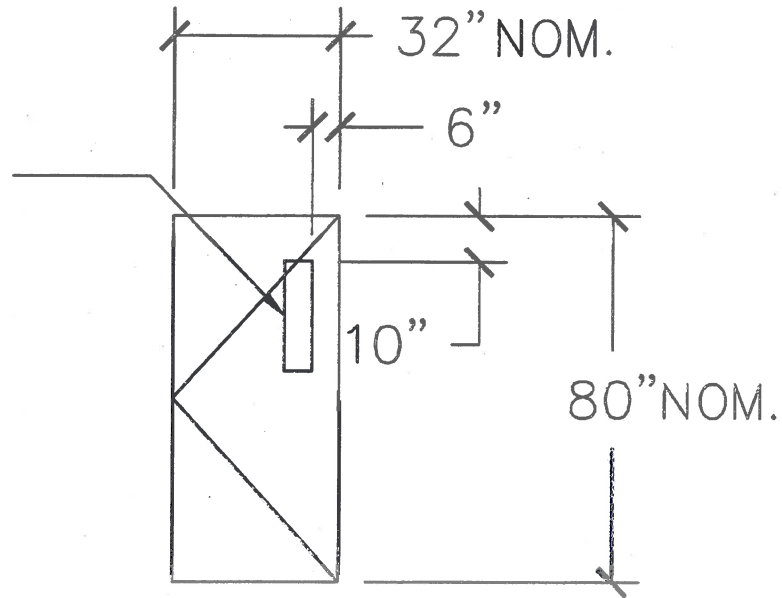
GENERAL NOTES

1. FIELD VERIFY EXISTING LOCKSET TYPE AND PLACEMENT IN ALIGNMENT WITH EXISTING STRIKE PLATES FOR EACH DOORWAY. FABRICATE NEW HOLLOW METAL (H.M.) DOOR LEAF TO REUSE AND ACCEPT EXISTING LOCKSETS.
2. INSTALL EXISTING LOCKET IN NEW HM DOOR LEAF POSITIONED TO ALIGN WITH EXISTING STRIKE-PLATE HOLE IN EXISTING DOORFRAME.
3. FIELD VERIFY DOORWAY CLEAR OPENING WITH AND WITHOUT NEW STAINLESS STEEL COVER PLATE. FABRICATE NEW HM DOOR LEAF TO FIT INTO REDUCE DOORWAY CLEAR OPENING WITH STAINLESS STEEL COVER PLATE.
4. PROVIDE STAINLESS STEEL COVER PLATE (THREE PER DOOR FRAME) WITH FACTORY DRILLED HOLES (SPACED 16" ON CENTERS) FOR FASTENERS AND FOR LOCKSET THROW-BOLT.
5. PROVIDE NEW CONTINUOUS STAINLESS-STEEL HINGE FOR EACH DOORWAY, SIZE TO FIT CLEAR DOOR OPENINGS. PRODUCT: MARKER HEAVY DUTY, CONTINUOUS HINGE FOR FIRE LABELED AND NON-FIRE LABELED DOORS; FM300-HT; PIN AND BARREL TYPE WITH PIN RESTRAIN CONCEALED WHEN IN CLOSED POSITION; BEVELED TOP END OF HINGE ASSEMBLY AT 45 DEGREES; FINISH SATIN STAINLESS STEEL. EQUAL PRODUCT TO BE REVIEW AND APPROVED WITH SUBMITTAL PROVIDE BY CONTRACTOR.




DRAWING NO. A103	DRAWING NAME: DOOR JAMB & HARDWARE INSTALL		PROJECT NAME: PROVIDE DOORS HIGHLAND RESIDENTIAL CENTER	IT IS A VIOLATION OF THE LAW FOR ANY PERSON, UNLESS HE IS ACTING UNDER THE DIRECTION OF A LICENSED PROFESSIONAL ARCHITECT TO ALTER THIS DRAWING IN ANY WAY. ALTERATIONS MUST HAVE THE SEAL AFFIXED ALONG WITH A DESCRIPTION OF THE ALTERATION, DATE AND SIGNATURE. COPYRIGHT 2008
	OF	PROJ.#	REVISIONS:	
DWG. BY:	DWG. DATE:		 Office of Children and Family Services KATHY HOCHUL Governor SHEILA J. POOLE Commissioner	Capital Services Bureau PH.(518) 473-0487 Room 106 South Capital View Office Park 52 Washington Street Rensselaer, N.Y. 12144
CKD. BY:	PLOT DATE:			

VISION PANEL
AS SPEC.



DOOR TYPE 1 – NEW
 INTERIOR H.M. DOOR 14GA
 FACE PANEL, 12GA. REINFORCE
 RAILS, STILES & INTERNAL
 BARS

DRAWING NO. A104		DRAWING NAME: DOOR TYPE		PROJECT NAME: PROVIDE DOORS HIGHLAND RESIDENTIAL CENTER		IT IS A VIOLATION OF THE LAW FOR ANY PERSON, UNLESS HE IS ACTING UNDER THE DIRECTION OF A LICENSED PROFESSIONAL ARCHITECT TO ALTER THIS DRAWING IN ANY WAY. ALTERATIONS MUST HAVE THE SEAL AFFIXED ALONG WITH A DESCRIPTION OF THE ALTERATION, DATE AND SIGNATURE. COPYRIGHT 2008
OF	PROJ.#	REVISIONS:		 Office of Children and Family Services KATHY HOCHUL Governor SHEILA J. POOLE Commissioner		
DWG. BY:	DWG. DATE:					
CKD. BY:	PLOT DATE:					
				Capital Services Bureau PH.(518) 473-0487 Room 106 South Capital View Office Park 52 Washington Street Rensselaer, N.Y. 12144		